

Orig 01025

CURACAO TWO DEPARTURE

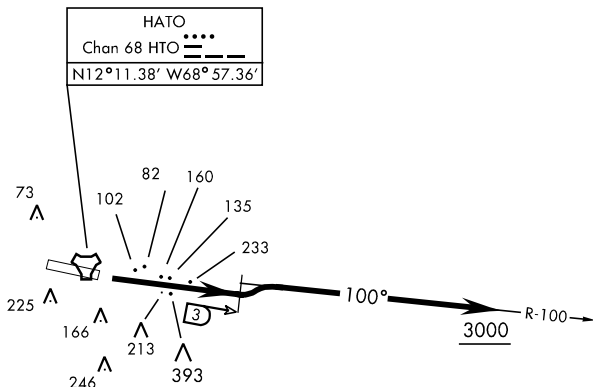
WILLEMSTAD, CURACAO I., NETHERLAND ANTILLES
HATO

PLESMAN TOWER ★
118.3
PLESMAN APP CON
119.6

[USN] SHL-1059 (DCA)

Rwy	Knots	60	120	180	240	300	360
11	V/V(fpm)	240	480	720	960	1200	1440

Minimum Climb Rate to 300



CAUTION:

Terrain with small to medium size trees rises rapidly 0.25 NM right/left of departure course within 1.5 NM of departure end of runway.

Terrain with trees 233' MSL located at 120°(T)/1.1 NM from departure end of Rwy11.

TA 2500



DEPARTURE ROUTE DESCRIPTION

TAKE-OFF RWY 11: Cross DER at or above 35' AGL, track outbound 100° to HTO 3 DME, then turn left to join the HTO R-100 climb and maintain 3000 or as assigned by ATC.

TAKE-OFF RWY 29: Comply with IFR Take-Off Minimums and (Obstacle) Departure Procedures, as published in the CSA Terminal FLIP.